



TAKING ACTION

SUSTAINABILITY IN TISCH FILM PRODUCTIONS

Presentation created by **Vanneeda Keowmang**, **Brad Sachs**, and **Heather Vaxer**

Advanced Television Production

Undergraduate Film and Television, Kanbar Institute

APRIL 2019

WHY?

Filmmaking is notoriously wasteful.
With approximately 300 intermediate
and advanced-level films made in
Tisch every semester, the waste is
monumental.

CONTEXT

Approximate cast and crew: 30

Advanced TV allotment

Senior-level production



IDENTIFYING PROBLEMS

WASTE CATEGORIES



Waste Management

- No separation of trash
- Poor sourcing of crafty and catering
- PLASTIC WATER BOTTLES

Power Usage and Travel

- Poor management of charging and charged batteries
- Usage of non-rechargeable batteries
- Set procedures used as excuses
- Wasteful transportation for convenience



Equipment, Props & Costumes

- Purchasing equipment solely for the production
- Making and disposal of production-specific props and costumes



SOLUTIONS & EXECUTION

GREEN PRODUCTION TOOL KIT

A project by the Producers Guild of
America referred to the production by
Earth Angel, an NGO dedicated to
making commercial film sets
sustainable.

WASTE MANAGEMENT

Trash Reduction 01

To reduce trash generated by the production proper:

- Reduce excess food waste by in-house catering (i.e. crew-cooked meals to reduce waste via food delivery) and donating leftover food to homeless shelters
- Crafty purchased in bulk from Costco
 - Kept in reusable containers
 - Organic, locally sourced
- Reduce trash by using compostable plates and utensils
- **PLASTIC BOTTLE BAN ON SET**
 - Vapor water bottles provided by production
 - Sports jug filled with clean water available for crew at all times



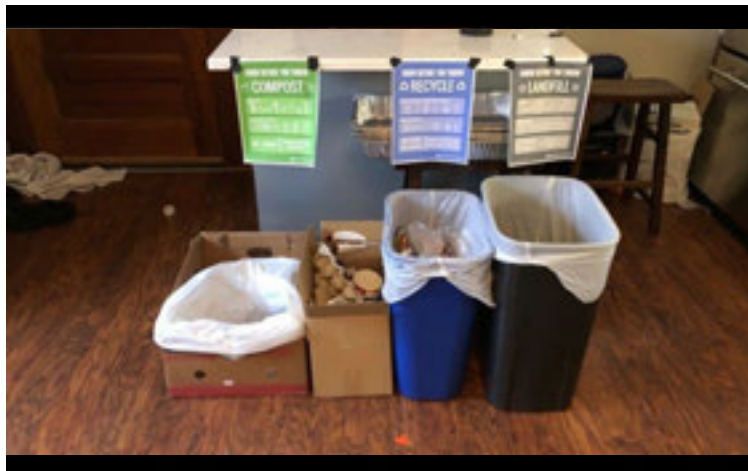
WASTE MANAGEMENT

Trash Separation 02

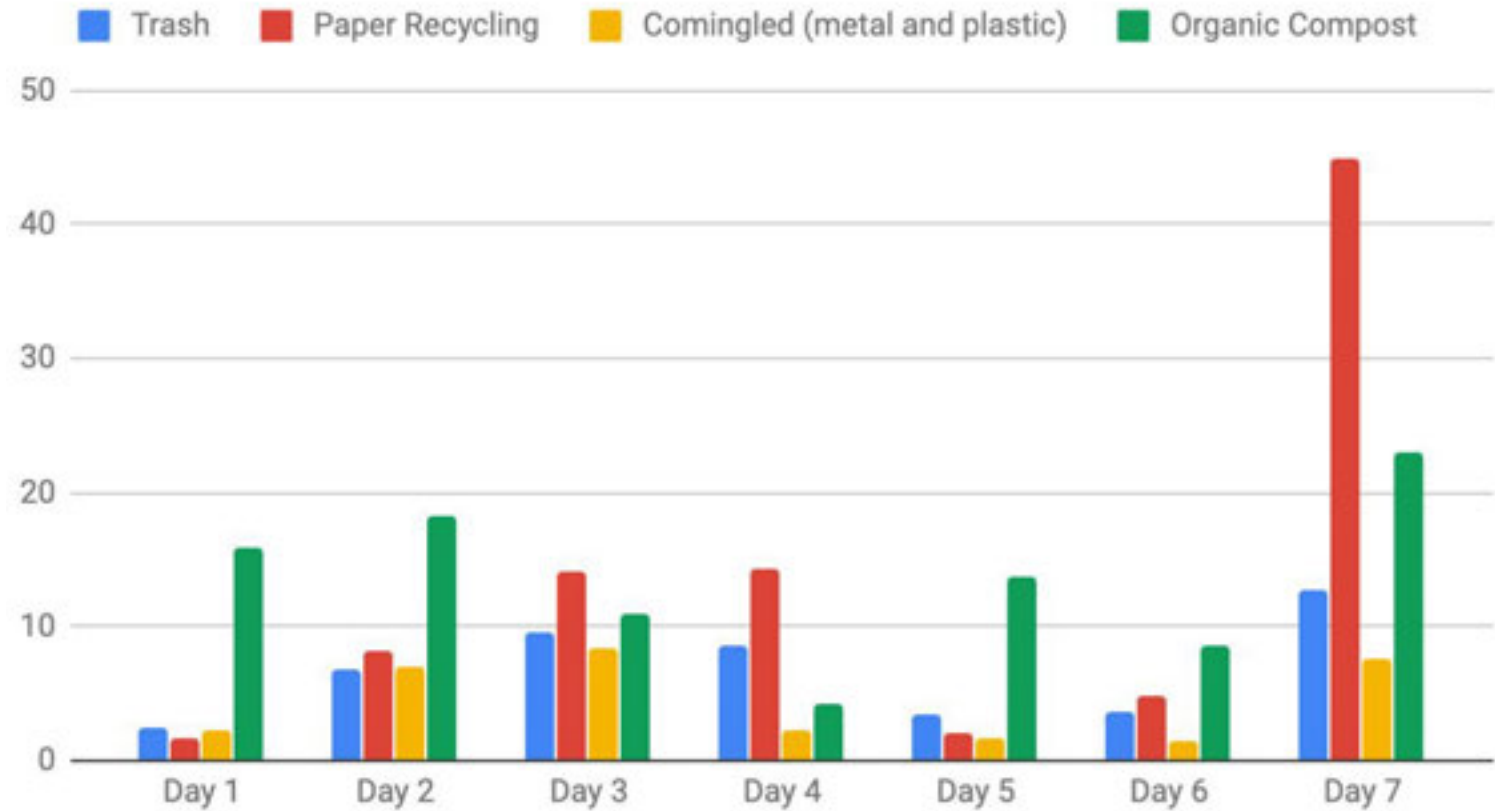
To reduce amount of trash by separating all waste generated by the production into the following categories:

- Paper
- Co-mingled (Metal and Plastic)
- Organic Compost
 - Food Scraps and Compostable Utensils
- Trash

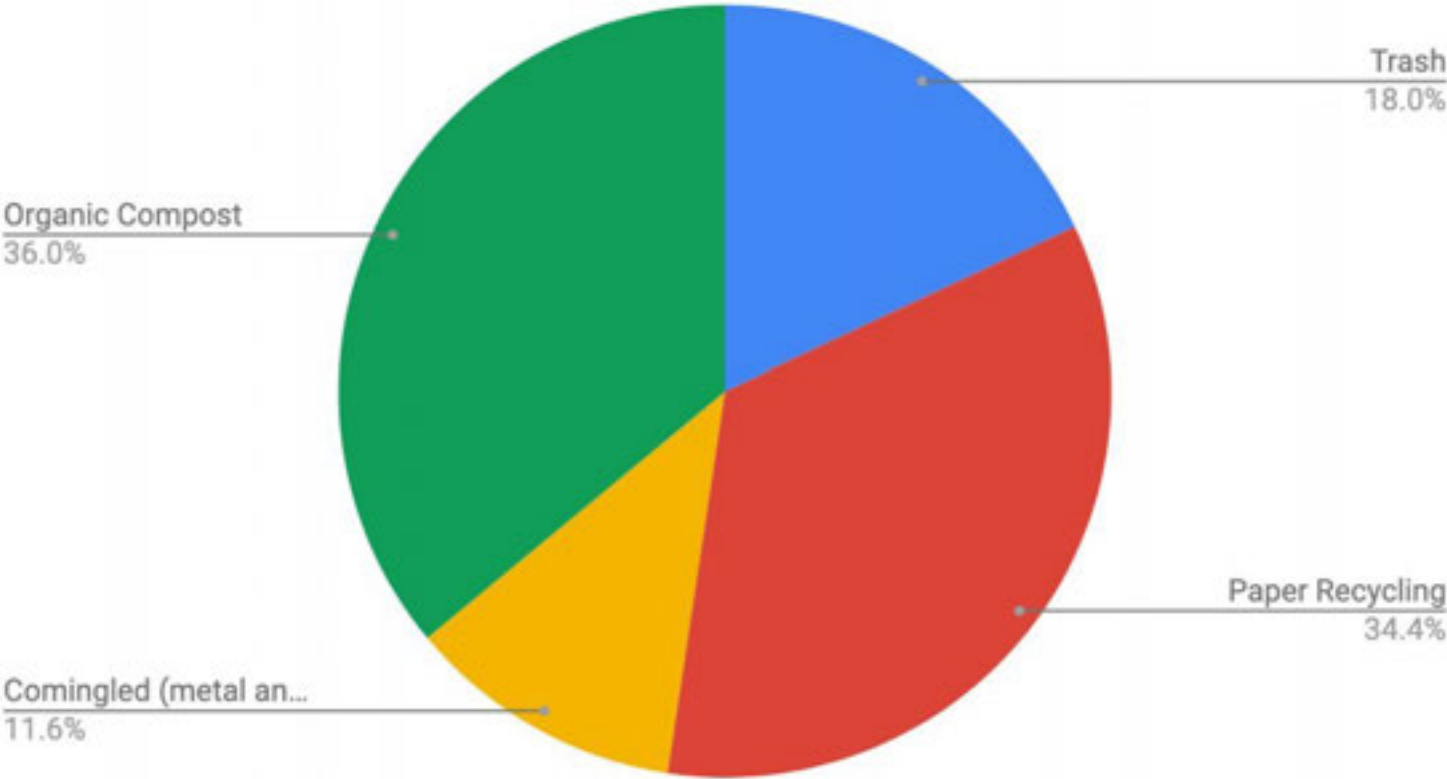
Important Note: NYC does not accept compostable plates and utensils. Waste volume for Weekend 2 is increased to compensate for this setback.



Daily Waste Chart (lbs)



Total Waste Distribution



TRAVEL

Weekend One (New Rochelle, NY) 01

Vehicles Used:

Core Crew - 2 passenger vans, 1 box truck, 1 car

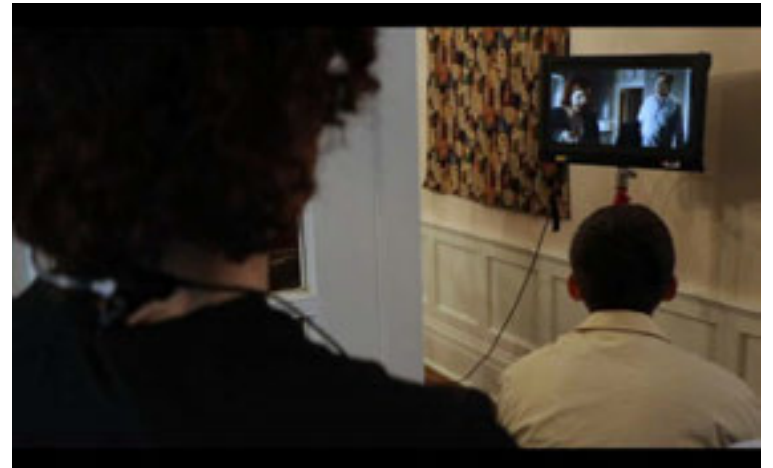
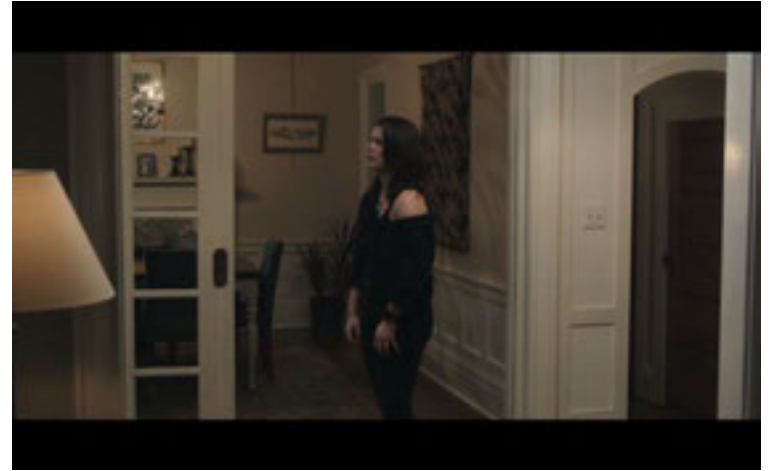
Day Players and Actors - Metro-North

**Note: Truck was parked at location for three nights with a no-idling policy*

Main Problem:

Transportation to and from Metro-North station for day players with specific schedule means several non-pooled car trips (additional waste)

Unfortunately, in unpaid productions, actor and day player convenience is a priority.



TRAVEL

Weekend Two (Brooklyn, NY) 02

Vehicles Used:

1 box truck, 1 car

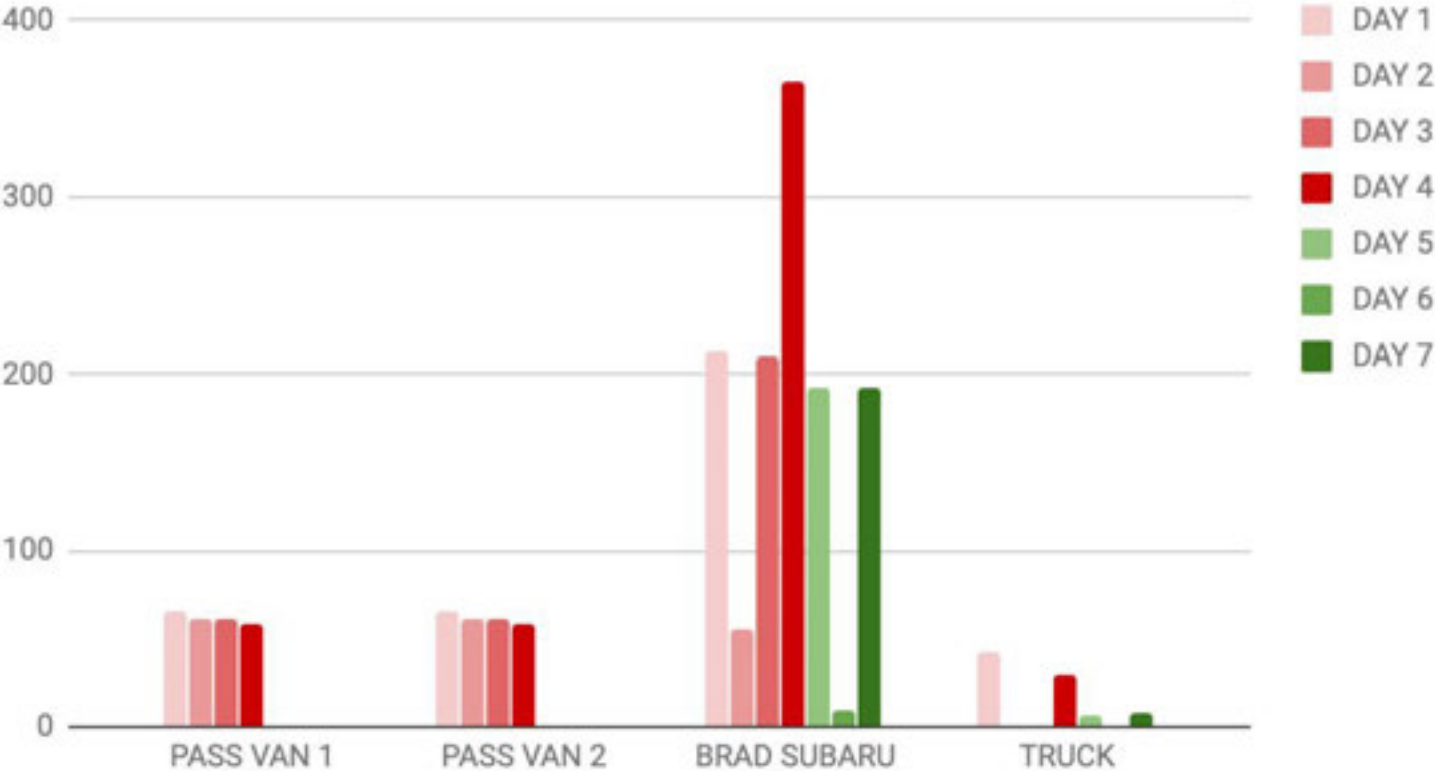
**Note: Truck was parked at location for two nights with a no-idling policy*

Subway:

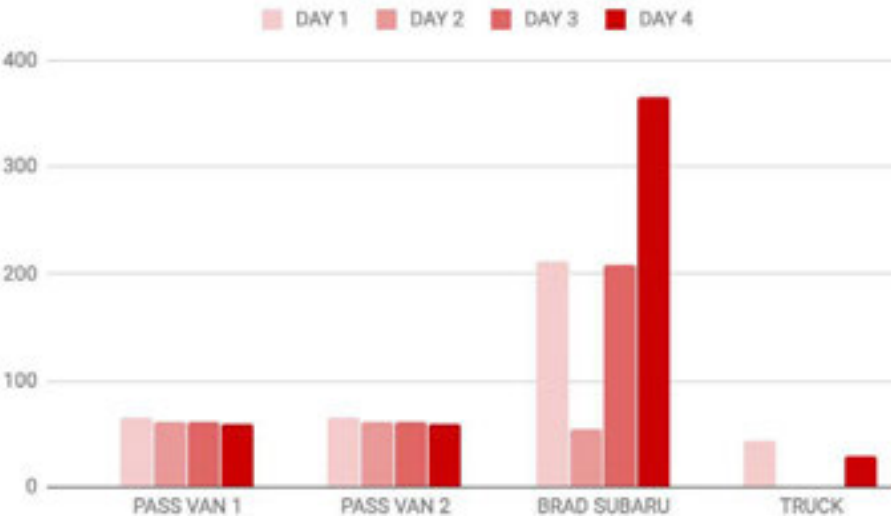
Transportation was mostly via York St subway station.
Extremely convenient. Travel waste at a production low.



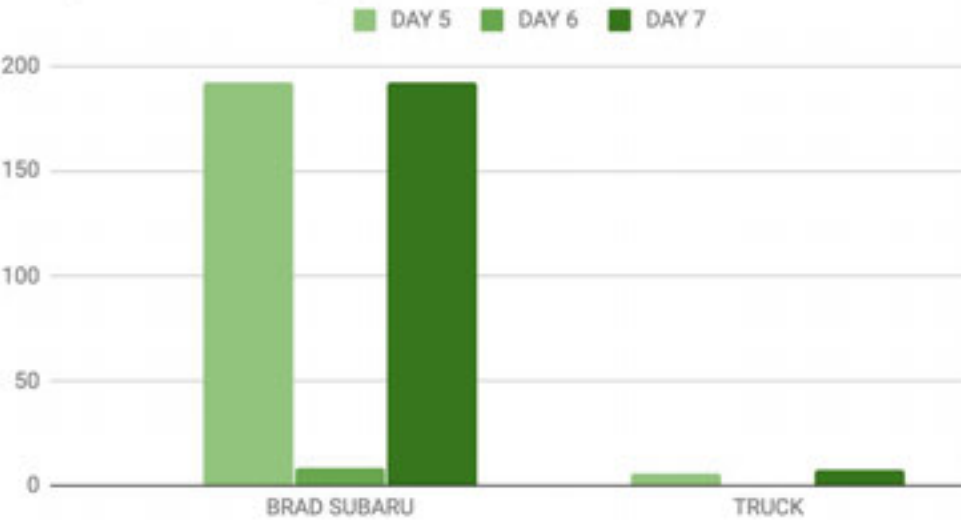
Daily Gasoline Usage Chart



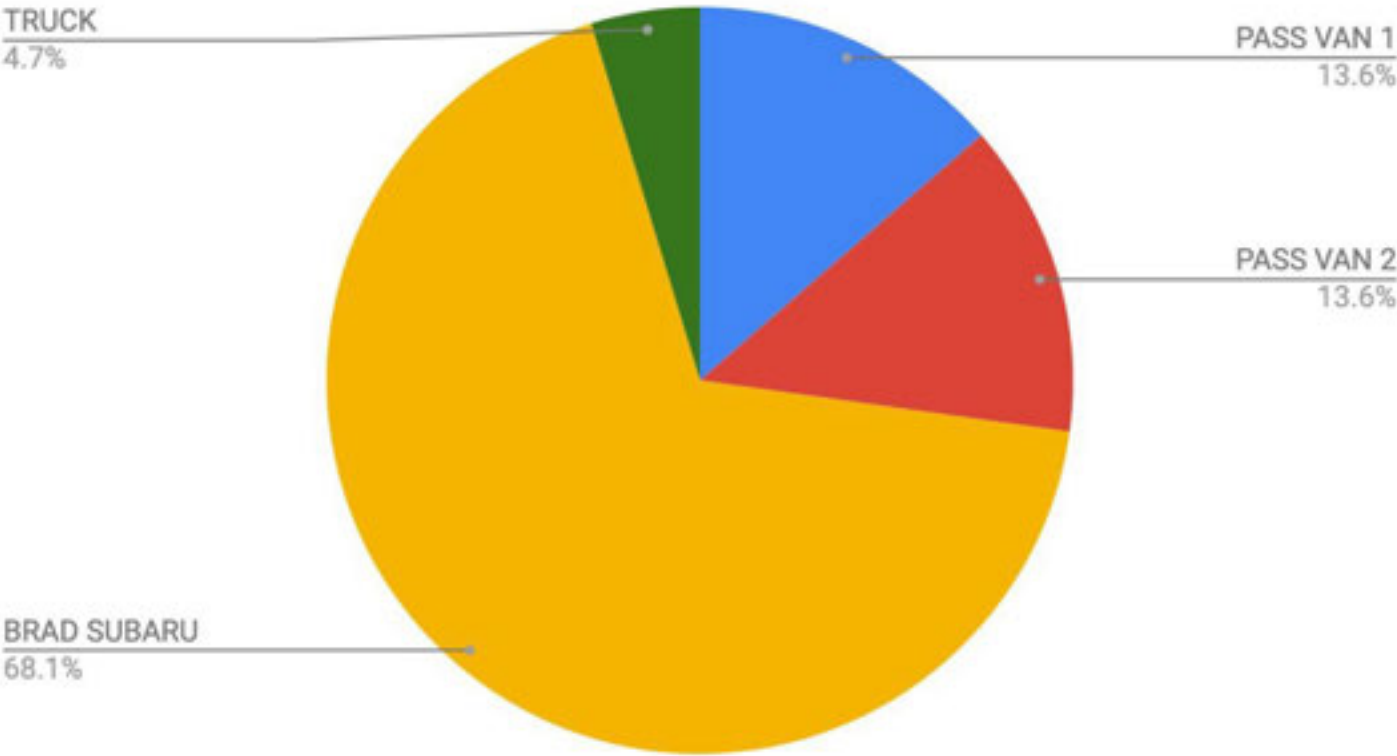
Daily Gasoline Usage (Weekend One)



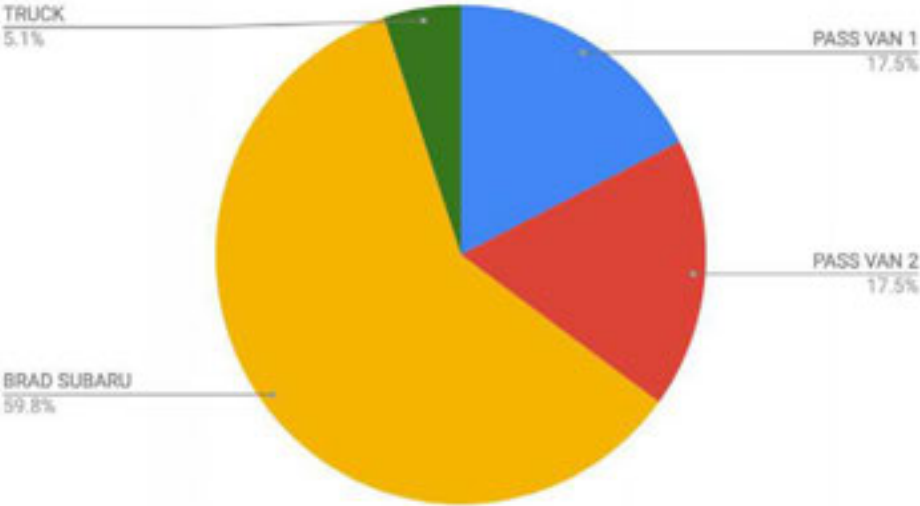
Daily Gasoline Usage (Weekend Two)



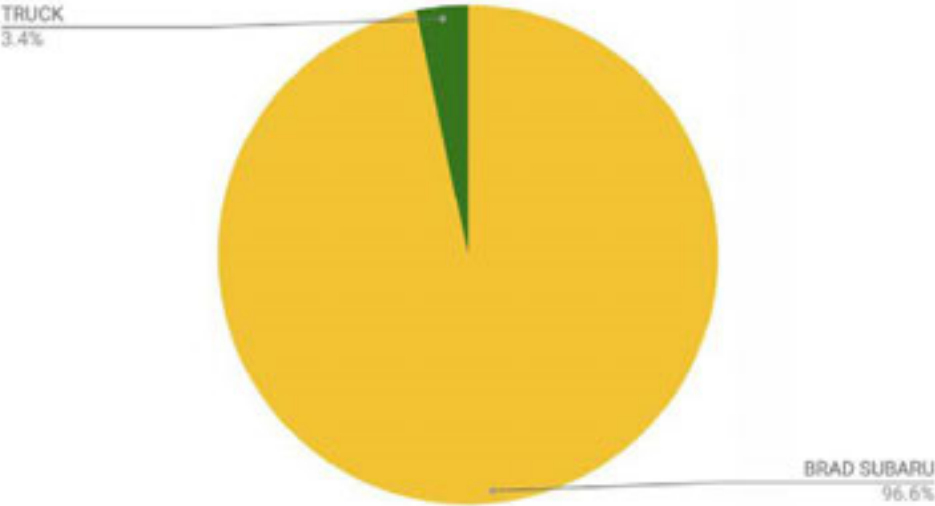
Distribution of Total Gasoline Usage



Distribution of Gasoline Usage (Weekend One)



Distribution of Gasoline Usage (Weekend Two)



POWER USAGE

Weekend One (New Rochelle, NY)

11.02.18 - 11.05.18

Location #1:

233 Broadview Ave, New Rochelle, NY 10804

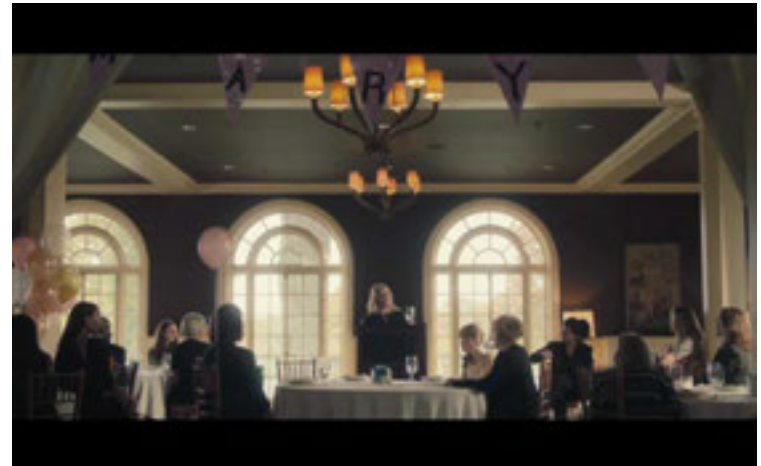
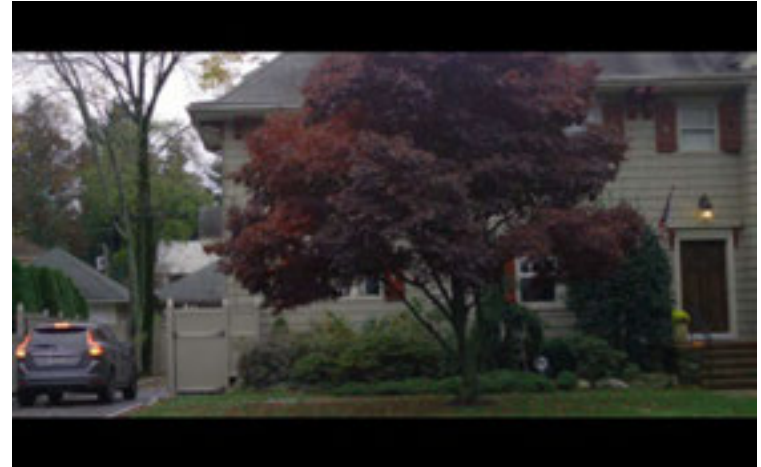
- 15,246 squarefeet
- 4 bed, 3.1 bath
- Two floors, basement

Location #2:

Siwanoy Country Club

351 Pondfield Rd, Bronxville NY 10708

- Estimated 9,500 square feet
- Formal dining room, banquet room, 2 bars, great room, outdoor dining



POWER USAGE

Weekend Two (Brooklyn, NY) 11.15.18 - 11.17.18

Location:

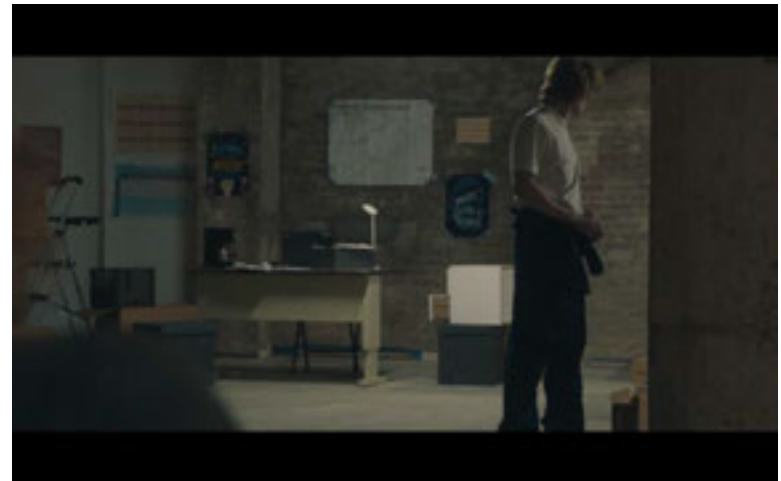
37 Bridge St, Brooklyn, NY 11201

Apartment building unfinished basement

- 8,000square feet
- 2-floor basement

Main Problems:

The production had no accurate way to calculate exact energy/electricity usage of the production. Therefore, we will be using the PGA-approved second method of calculation: by area size of location.



	A	B	E	F	G	H	I	J	K	L	W	X	Y	Z	AA	AB	AC	AD	AE	AF
2	Click for Checklist				Required field			Input not required												
4	Did the Mob (Pilot) Purchased Electricity																			
6	Did You Purchase Renewable Energy or RECs?		Comments																	
7	Did you use power drops?																			
8	How much energy was powered from power drops?																			
10	Location: Enter information only for ONE option for each location																			
11	Location Name		Electricity Use (kWh)	Total Area (e.g., Total Square Feet)	Units	Days Used	Total Cost of Electricity (US\$)	Cost Data Source	Option Selected											
13	New Rochelle House			15,246	square feet	3			2nd Option											
15	Sierany Country Club			9,560	square feet	1			2nd Option											
16	Dumbo Warehouse			8,880	square feet	3			2nd Option											
17																				
18																				
19																				
20																				
21																				
22																				
23																				
24																				
25																				
26																				
27																				
28																				
29																				
30																				
31																				
32																				
33																				
34																				
35																				
36																				
37																				

Instructions

- General Electricity Questions:** Select Yes or No from the dropdowns to identify if you purchased renewable energy, RECs or used power drops on your production.
Enter comments about your production energy use (optional)
- Location:** Select a Location Name from the dropdown box. Locations are entered in column B of the Production Info Tab
- From & End Date (optional):** Enter the start and end date of the location electricity information (e.g., the dates on the invoice) into column C and D, respectively
- Enter data for ONE Option for Electricity Information for each location entered:** (Note: Include weekends in date ranges, unless specified otherwise. This factors in longer average work days.)
 - Preferred Option- Actual Electricity Use:** Enter the actual electricity use (in kWh) for the selected location into column E
 - Second Option- Area:** Enter the location area in column F, select the area units from column G, and enter the number of days the location was used in column H
 - Third Option- Cost:** Enter the total cost of electricity for the location in column I, and select the cost data source (invoice or rent) from column J

Copy Facility Information to Natural Gas Tab:

Click the purple button to transfer the location names and Options 2 information (area, units and days used) to the Natural Gas and Heating Oil tab. Clicking the button multiple times will add the same values multiple times.

2-Electricity
3-Nat Gas & Heating Oil
4-Fuel
5-Hotels-Housing
6-Commercial Air Travel
7-Charter and Heli Flights
8-EAR Metrics
9-EAR

CARBON FOOTPRINT SUMMARY

As per PGA-approved Environmental
Accounting Report Calculator

Environmental Accounting Report

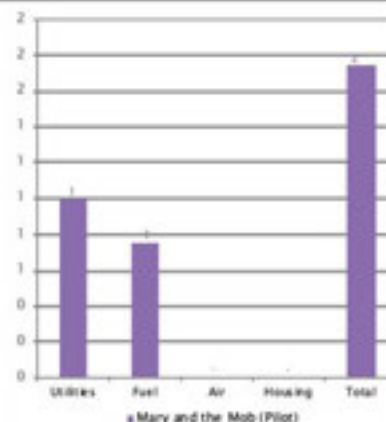
Carbon Footprint Summary

Mary and the Mob (Pilot)

Total CO₂ Emissions **2** Metric tons

Canada
0

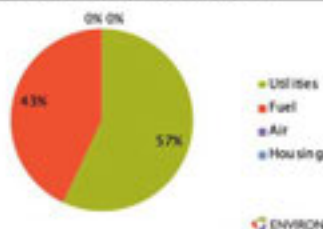
CO₂ Emissions by Source
(Metric Tons)



CO₂ Emissions per
Episode



Source Percent Contribution



Environmental Accounting Report

Mary and the Mob (Pilot)

Additional measures or challenges:

Sustainable and organically-sourced make-up and snacks throughout the shoot.



Waste Diversion

Diversion Rate: **82%**

COMMENTS

NYC does not accept compostable plates and utensils. Waste volume for Weekend 2 is increased to compensate for this setback. Mixed and metal recycling is grouped.



Recycled Paper Content

2
Total Reams of
Paper Used

0
Trees Saved

COMMENTS

Paper used: TreeZero™ Copy Paper (100% Tree-Free). Paper Recycling included under "Other Recycled"



Water Bottle Usage

- Water bottles used
- Water bottles avoided
\$(680) Reduced water bottle
use cost savings

COMMENTS

Bottles used: Sports jug, Vapor collapsible bottles & NYU Office of Sustainability stainless steel bottles.



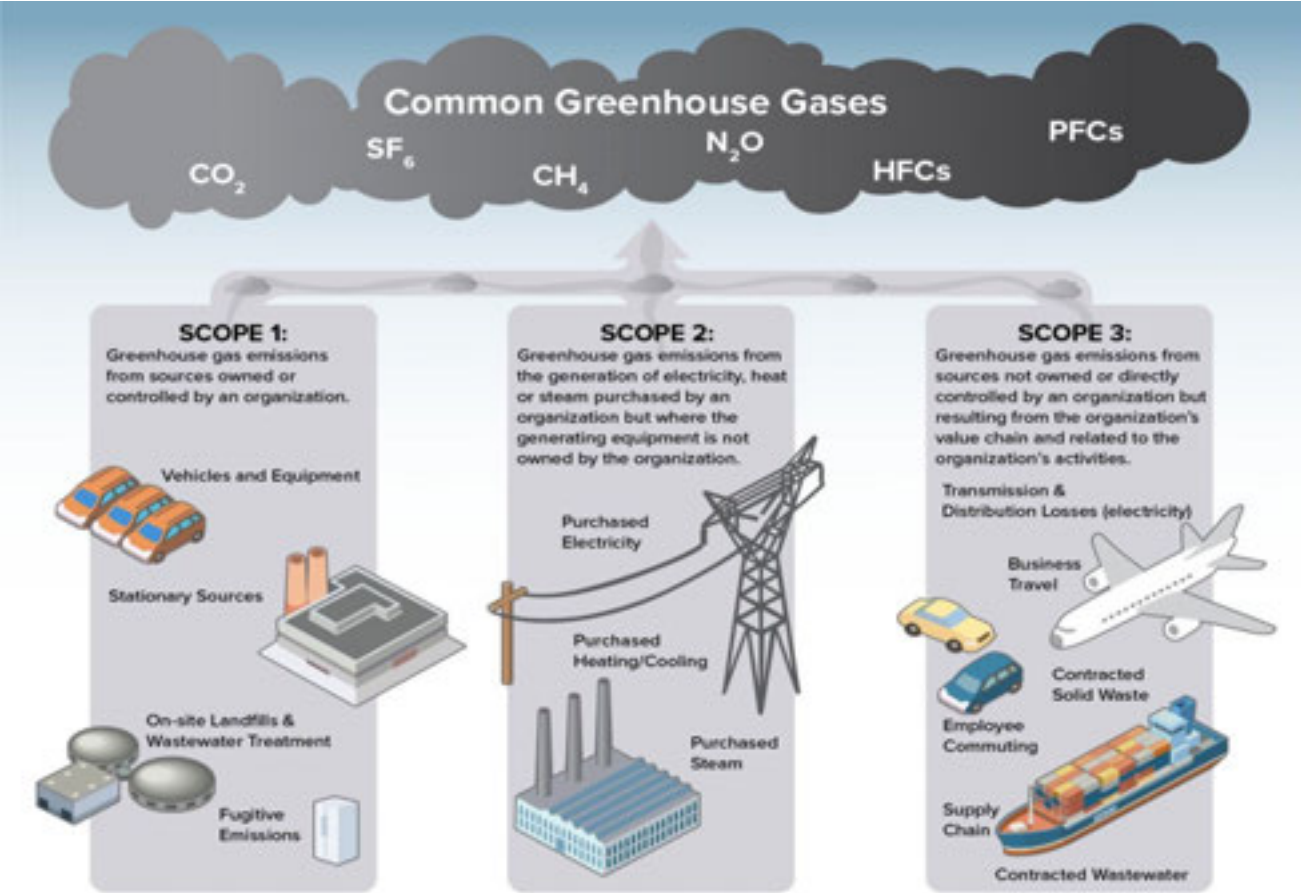
Donations

COMMENTS

Little to no leftover food on set due to zero-waste policy.

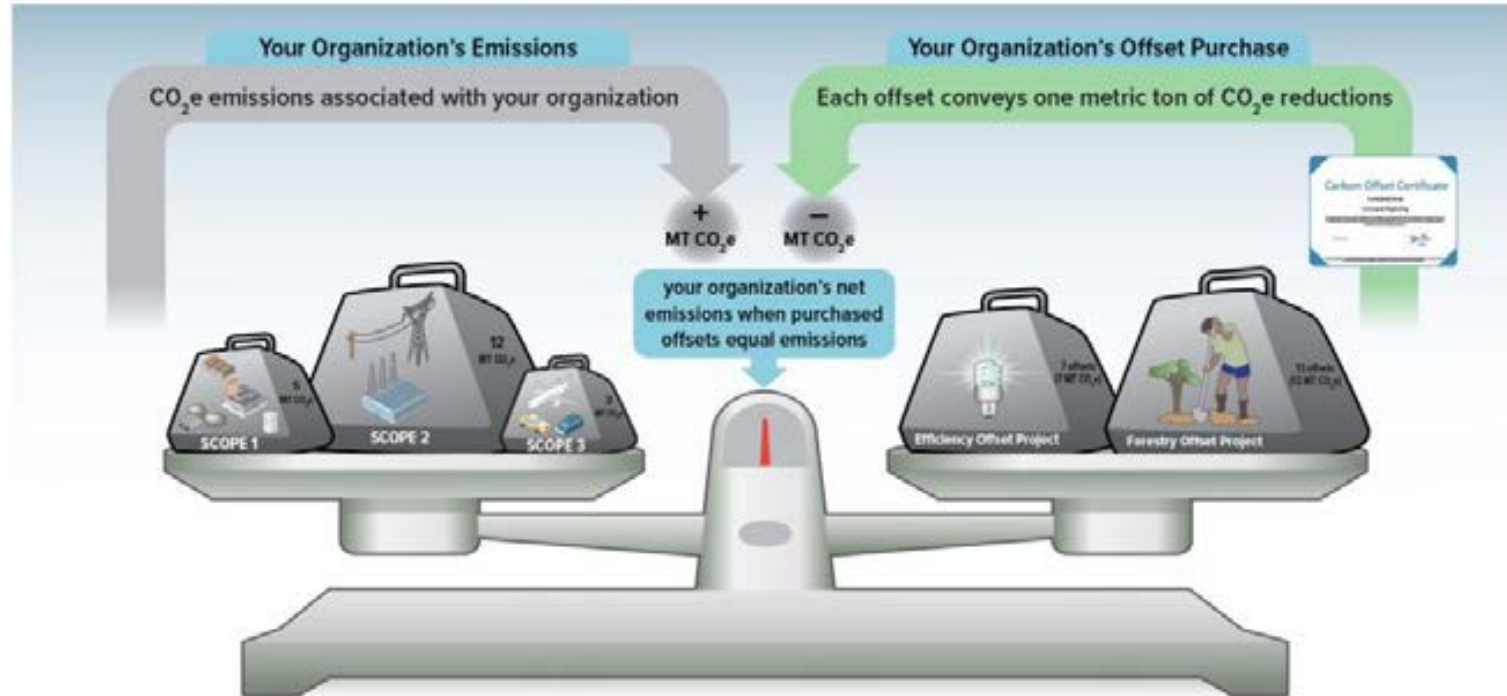
CARBON NEUTRAL

Offsets vs Renewable Energy Certificates (RECs)

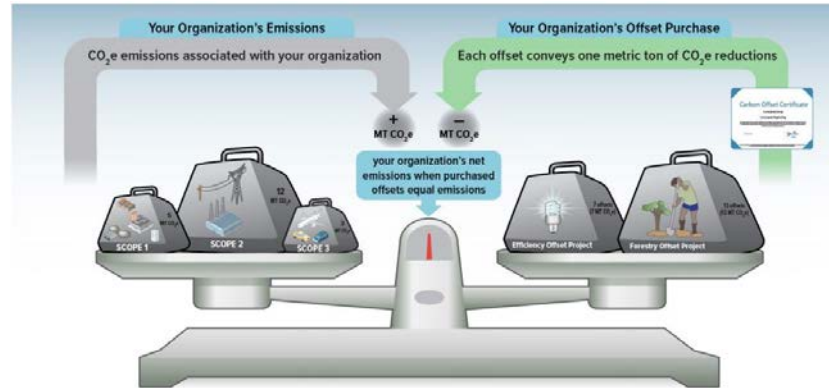


Basic Differences	Offsets	RECs
Unit of Measure	Metric tons of CO ₂ or CO ₂ Equivalent	Megawatt hours (MWh)
Source	Projects that avoid or reduce greenhouse gas (GHG) emissions to the atmosphere	Renewable electricity generators
Purpose	Represent GHG emissions reductions; provide support for emissions reduction activities; and lower costs of GHG emissions mitigation	Convey use of renewable electricity generation; underlie renewable electricity use claims; expand consumers' electricity service choices; and support renewable electricity development
Corporate GHG Inventories and Reporting	Reduce or "offset" an organization's scope 1, 2 or 3 emissions, as a net adjustment	Can lower an organization's gross market-based scope 2 emissions from purchased electricity
Consumer Environmental Claims	Can claim to have reduced or avoided GHG emissions outside their organization's operations	Can claim to use renewable electricity from a low or zero emissions source

SELECTED STRATEGY: OFFSETS



SELECTED STRATEGY: OFFSETS



- Availability of offset calculations through the Green Production Toolkit
- More suitable for scale of student set (Scopes 1-3 instead of just Scope 2)
- More research needed for RECs' applicability to student sets

2 METRIC TONS OF CARBON

Selecting a carbon offset project on
the basis of our two biggest
contributors: electricity and fuel

ELECTRICITY

One metric ton for a renewable energy carbon
offset project

— Costa Rica

Renewable Energy Wind Turbines

Help supply renewable energy to thousands of Costa Rican families with the construction of wind turbines.



WHAT IT DOES

HOW IT WORKS

WHO IT HELPS

WHY WE CHOSE THIS PROJECT



What it does



When Mother Earth breaks wind, turbines generate renewable energy, supplying clean energy to thousands of Costa Rican families. This reduces both greenhouse gas emissions and the country's reliance on fossil fuels. It also benefits the local economy by adding jobs and education. Now that's wind power to the people. **Bottom Line:** Help the Los Santos Wind Power Project provide renewable clean energy to families while helping the local community.



SUPPORT THIS PROJECT

Tonnes

-

1

+

\$8.79

Frequency of Donation

- ☒ One Time
- ☐ Monthly

DONATE

WHERE DOES YOUR MONEY GO?

Benefits

- Provides clean electricity for 50,000 people and 10,000+ households in rural Costa Rica
- Prevents 11,000 tonnes of CO₂ from entering Earth's atmosphere every year
- Project proceeds flow back into the community in this impoverished area and help renovate schools and provide public lighting and services
- Project offers environmental and renewable energy education to people from regions across Costa Rica

Challenges

- Expanding the project is costly and complex
- Building turbines in Costa Rica's mountains can be a long process and may include clearing land

FUEL

One metric ton for a nitrous oxide
carbon offset project

— United States

Nitrous Oxide Abatement

When fertilizer is manufactured, it gives off one of the most powerful of all greenhouse gases—N₂O. This project supports the abatement of N₂O by separating it into its components; nitrogen and oxygen.



WHAT IT DOES

HOW IT WORKS

WHO IT HELPS

WHY WE CHOSE THIS PROJECT



What it does



You may know nitrous oxide as laughing gas, but it is no laughing matter. N₂O is a greenhouse gas over 300 times more powerful than CO₂ in holding heat in our

atmosphere, is destructive to the Earth's protective ozone layer but its emissions are unregulated. This project supports the installation of a proven catalytic technology that reduces N₂O emissions. N₂O abatement is a voluntary, vital and worthwhile investment that improves our environment and keeps our farms productive. **Bottom Line:** CF Industries, by installing this technology, is stepping up to do the right thing, even though government regulations do not require it to do so.



SUPPORT THIS PROJECT

Tonnes

-

1

+

\$8.79

Frequency of Donation

- ☒ One Time
- ☐ Monthly

DONATE

WHERE DOES YOUR MONEY GO?

Benefits

- Reduces harmful N₂O emissions (310 times the global warming potential of CO₂)
- \$600,000 in profit generated from previous credits has been donated to Future Farmers of America
- CF Industries has agreed to give 100% of the proceeds net of \$1 per credit, which goes to the project developer, to The Nature Conservancy's project to decrease nutrient runoff from fertilizer use into the Mississippi watershed

Challenges

- Monitoring and reporting requirements are strict and complex
- To install this technology, the plant needs to be temporarily shut down



SOCIAL REPORT

SOCIAL REPORT

Observations/Pow Wows Producer POV

Crew:

Freshmen PAs and crewmembers more open and interested to sustainability efforts. Junior/Senior crew more set in their ways.

Many on-set sustainability discussions.

LOVED the Vapur reusable water bottles.

Received several consultation requests after project success.

Cast:

Organic makeup actually improved skin condition of actors (they even asked for recommendations!).

Food:

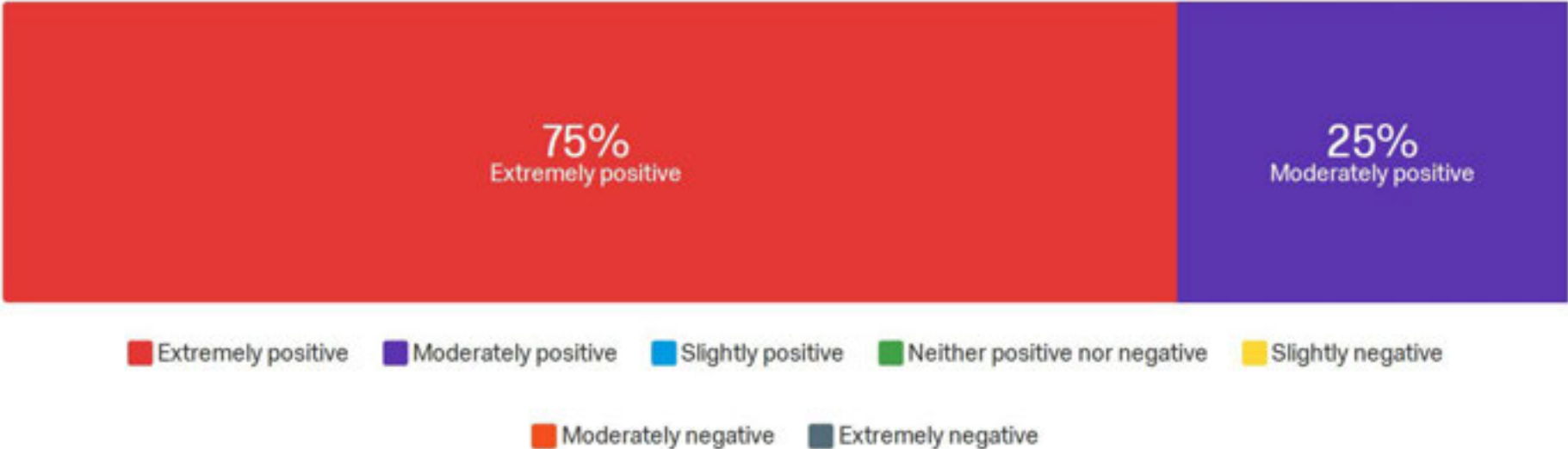
Organic crafty and crew-cooked meals improved morale and reduced after-lunch slump considerably.



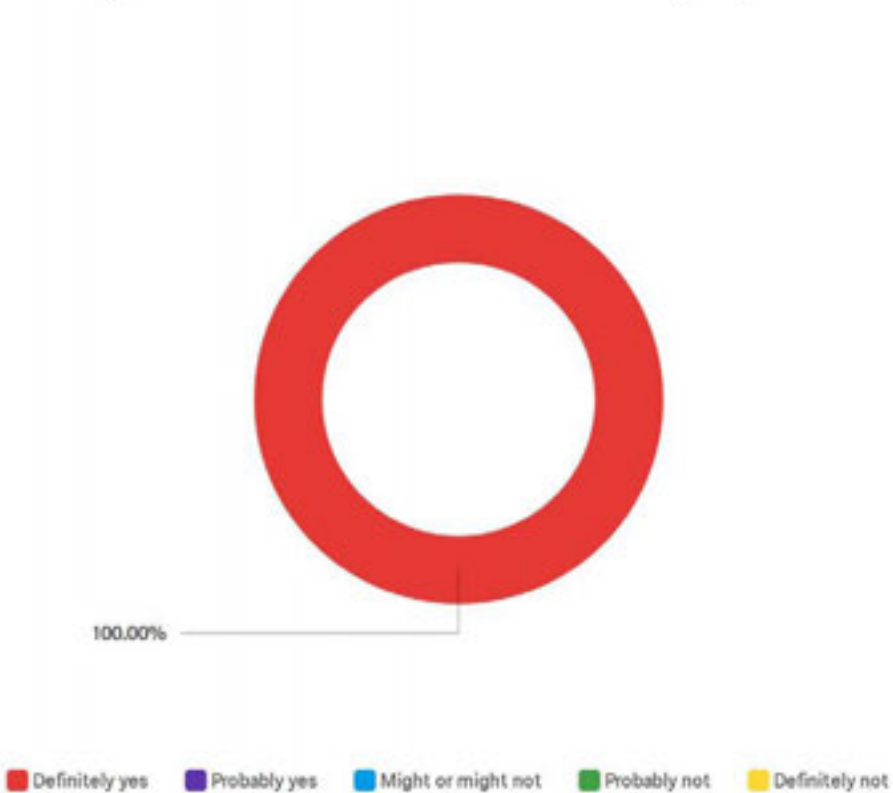
SOCIAL SURVEY RESULTS

Cast and Crew responses

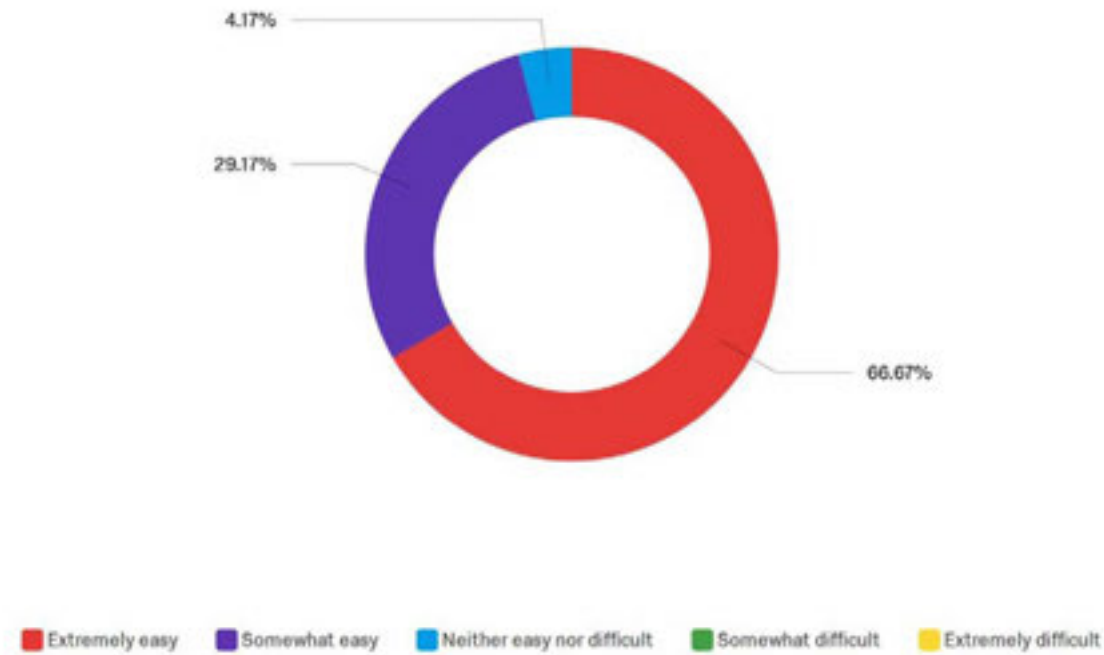
Q1 - Overall, how did you feel about your experience working on this set?



Q2 - Did you notice any of the Sustainable initiatives being implemented on set?

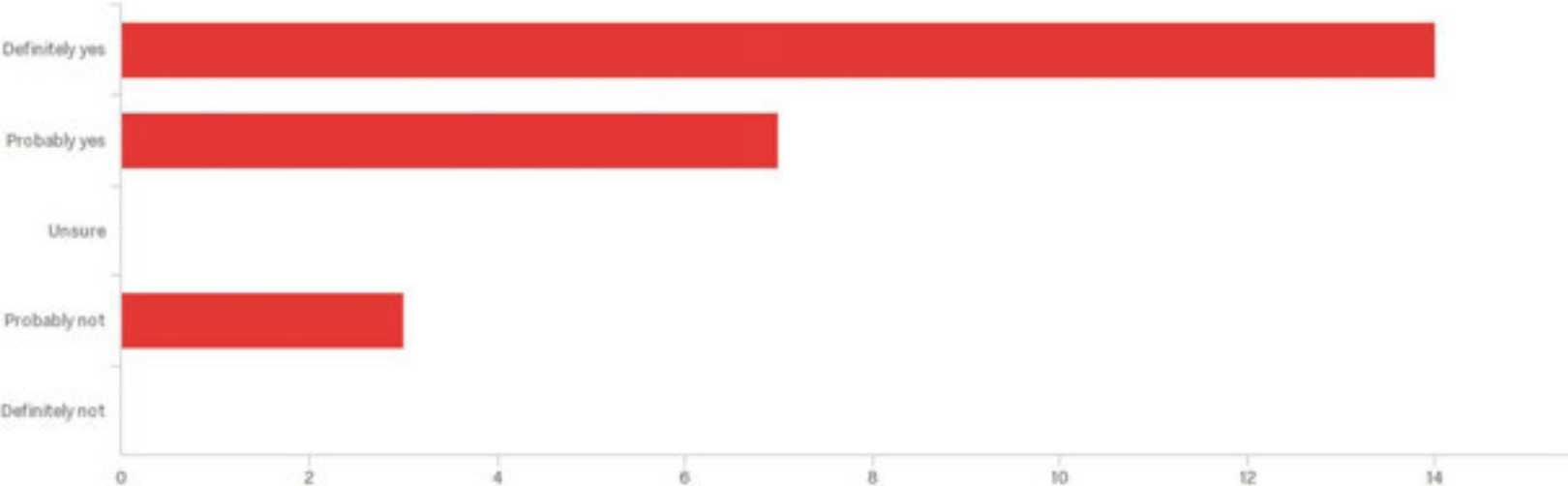


Q3 - How easy was sorting and disposing of waste to accomplish?

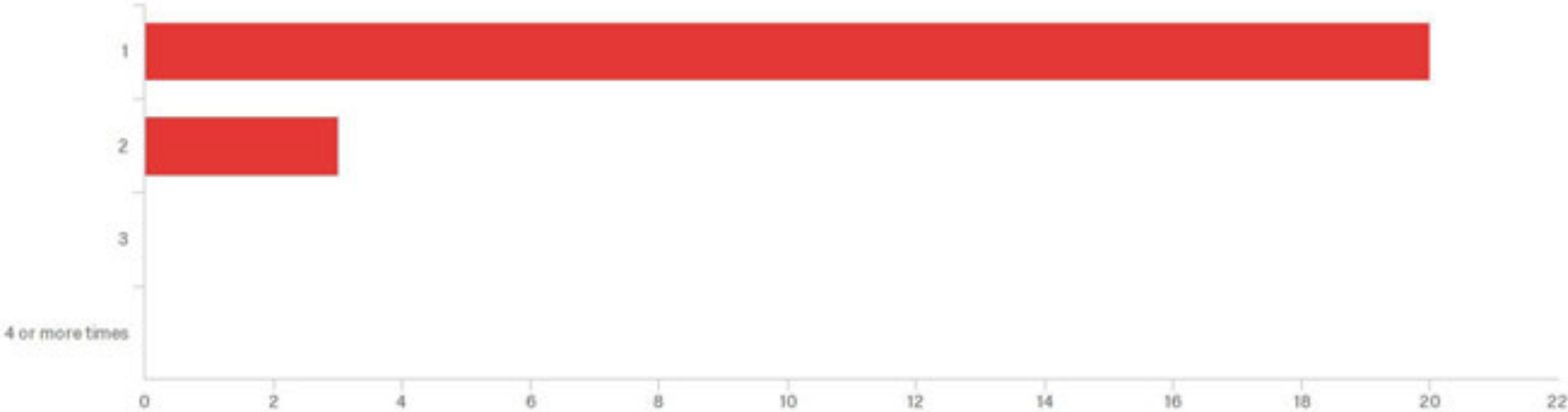


**It is important to note the presence of our sustainability supervisor by the trash to ensure proper disposal.*

Q4 - Did you make changes to your normal routine that were more sustainable on this film set?



Q5 - Including this film, how many times have you been on a Green Film Set?



Q6 - Was there something wasteful on the set that could have been avoided?

Energy saving & implementation (lights on in bathroom, etc)

Not that I can think of!

N/a

nothing

No

Possibly cutting back electricity usage?

Coffee cups- reusable coffee cups?

Not that I remember.

there were too many people

Tape

Rarely

Not really

N/A

no

Always is. I think we did have some leftover food.

Q7 - What is a Sustainable practice you think should be implemented on a future set?

Sustainability PAs

Having the AD or Producer continually remind Camera, Sound, and G+E to unplug equipment that is fully charged.

compost, reusable water bottles

LED lights to save energy

getting rid of plastic bottles

Using reusable water bottles and recycling.

Water Bottles

Using compostable/reusable utensils and plates

water bottle

Giving everyone a reusable water bottle with the ability to refill is as opposed to buying plastic water bottles.

Q7 - What is a Sustainable practice you think should be implemented on a future set?

Possibly ensuring there is more than one recycling bin for the whole set, there was a time when it got moved and many people were confused.

Giving out individual water bottles

Reusable clip on waterbottles, sorting of waste

Absolutely

refillable water bottles and biodegradable utensils would be easy enough to practice on any set

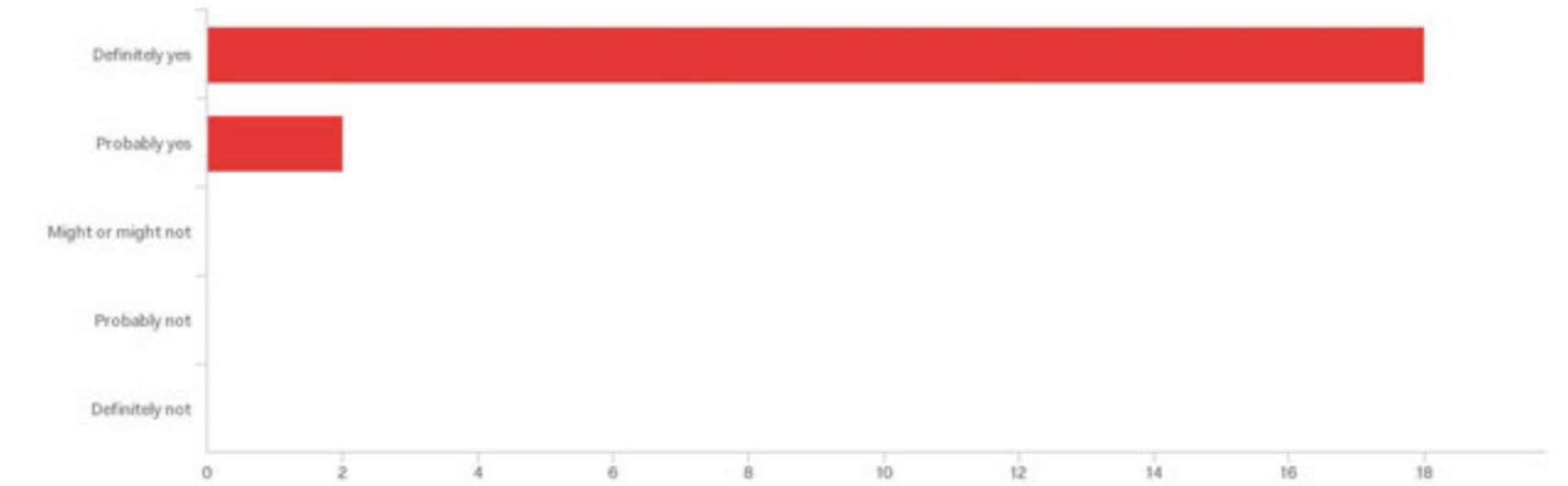
Measuring total electricity used

no single use plastic

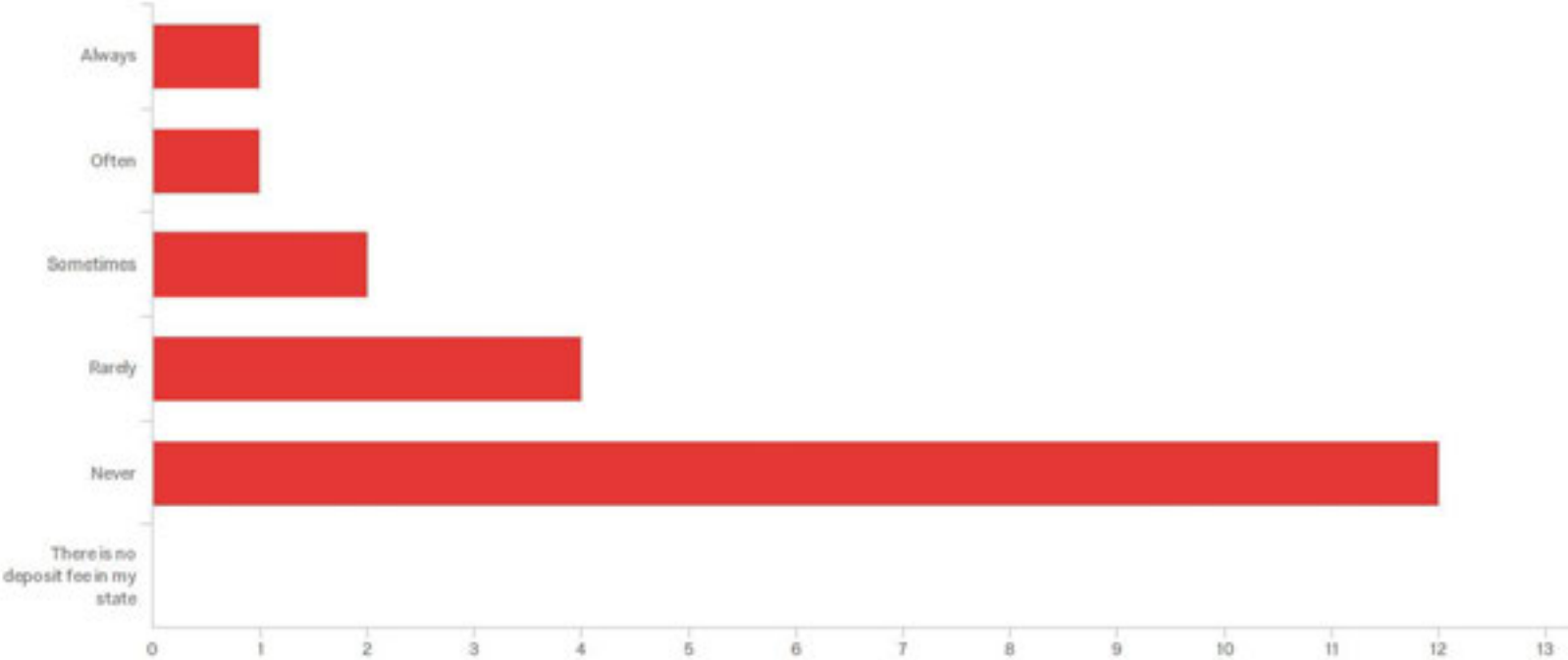
Composting, separating recycling from trash.

Crew members should bring their own non-plastic water bottles.

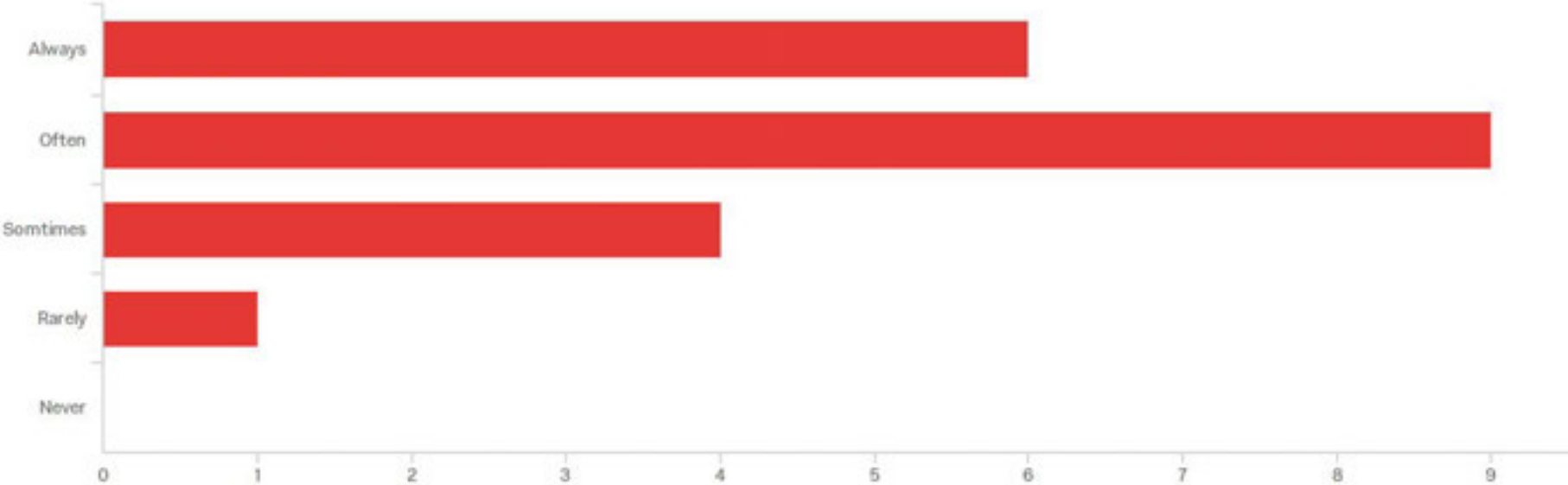
Q8 - Is sustainability something you think you would like to see on sets that you work in the future?



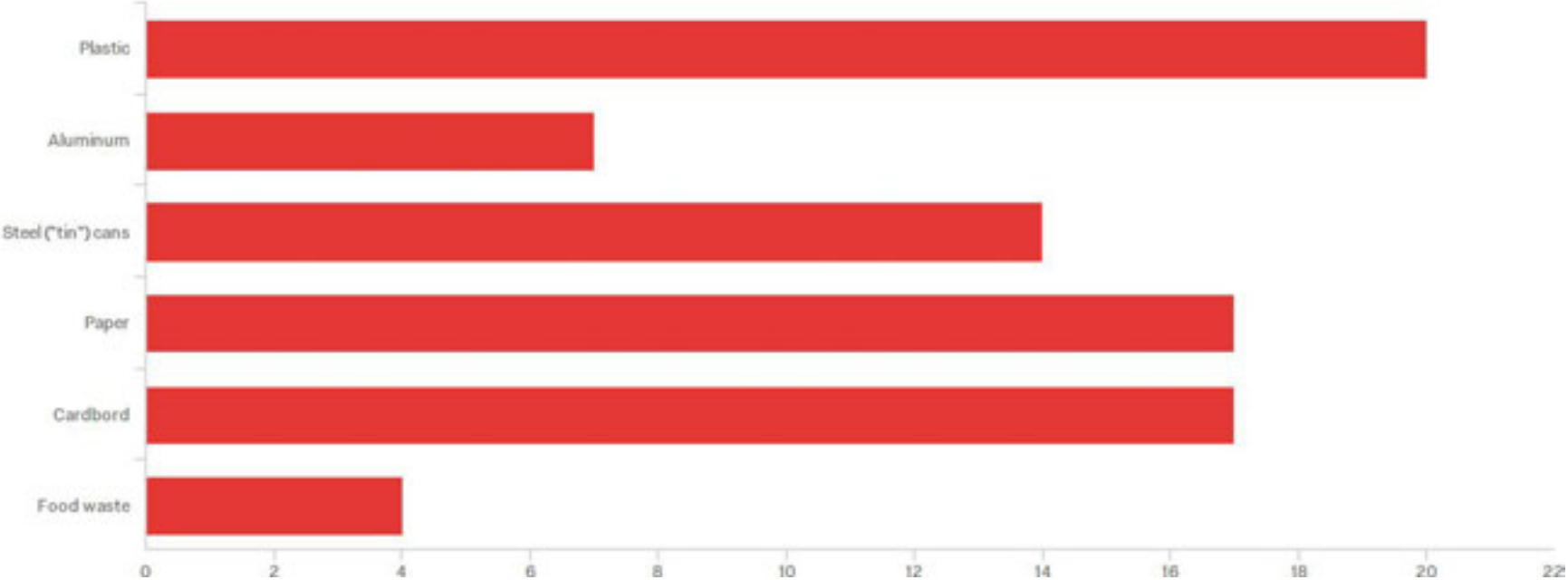
Q9 - How often do you return beverage containers to recoup the deposit fee?



Q10 - How often do you recycle at home?



Q11 - What materials do you Recycle/compost at home? (select all that apply)



A blurred background image showing hands holding a glowing orb, symbolizing resources and motivation.

RESOURCES & MOTIVATION

PGA-APPROVED RESOURCE

Green Production Guide 01

Featuring nearly 2,000 companies that provide sustainable and energy saving products and services for film, television and commercial productions, The Green Production Guide aims to take all media green one set at a time.

Data Generation and Recording:

The Toolkit provided contains the PEAR Carbon Calculator, a pre-formulated Excel sheet used by many large film productions. This toolkit also contains the PEACH Best Practices Checklist, letters to the production, and tips for productions.





Call Sheet Green Tips and Facts

Being a sustainable producer involves making green choices in every aspect of your production. These call sheet tips and facts are designed to help you make the most of your production resources and reduce your environmental footprint.

Remember, every green choice you make, no matter how small, adds up to a greener production. These tips and facts are designed to help you make the most of your production resources and reduce your environmental footprint.

Remember, every green choice you make, no matter how small, adds up to a greener production. These tips and facts are designed to help you make the most of your production resources and reduce your environmental footprint.



A Note to Producers

Getting started with sustainable production involves making green choices in every aspect of your production. These call sheet tips and facts are designed to help you make the most of your production resources and reduce your environmental footprint.

Remember, every green choice you make, no matter how small, adds up to a greener production. These tips and facts are designed to help you make the most of your production resources and reduce your environmental footprint.

Remember, every green choice you make, no matter how small, adds up to a greener production. These tips and facts are designed to help you make the most of your production resources and reduce your environmental footprint.




Weekly Walkthrough

The following is a weekly walkthrough of the Green Production Guide, designed to help you make the most of your production resources and reduce your environmental footprint.

Remember, every green choice you make, no matter how small, adds up to a greener production. These tips and facts are designed to help you make the most of your production resources and reduce your environmental footprint.

Remember, every green choice you make, no matter how small, adds up to a greener production. These tips and facts are designed to help you make the most of your production resources and reduce your environmental footprint.



GREEN PRODUCTION GUIDE

A PROJECT OF THE PRODUCERS GUILD OF AMERICA

Version 3.3.0

Environmental Accounting Report Calculator General Info & Checklist

Information you use is collected on a separate worksheet tab. Information is not required for every tab, and should only be entered for the emission sources associated with your production. The table below provides a general description of the information collected and data collection status for each emission source data collection worksheet.

Please contact [name] at 410-333-1002 with any questions.

Click on a tab name to link to the sheet:

Status	Calculator Tab	Description
Data Entered Correctly	1-Production Information	Calculator contact information & general production information including production name, headquarters location & schedule. Production location information (e.g., production offices, warehouses, stages) used for utility electricity, natural gas & heating oil tracking.
Data Entered Correctly	2-Electricity	Total electricity used for all locations entered in Production Info.
Data Not Entered	3-Natural Gas & Heating	Total natural gas and/or heating oil used for all locations entered in Production Info, if appropriate.
Data Entered Correctly	4-Fuel	Fuel used for equipment (e.g., generators) and vehicles.
Data Not Entered	5-Hotels & Housing	Number of days and location of hotels, houses and condos rented during the production.

Intro & Checklist 1-Production Info 2-Electricity 3-Nat Gas & Heating Oil 4-Fuel 5-Hotels & Housing

BYOWaterBottle!



On average, just 10 minutes of water use can result in 13 million pounds of waste. That's a lot of waste. Use enough to stay hydrated, but not too much. 1,300,000 lbs of waste.

AVOID WASTE

DITCH PLASTIC. USE THE COOLER.

GREEN PRODUCTION GUIDE

THIS IS AN IDLE FREE PRODUCTION



GREEN PRODUCTION GUIDE

KNOW BEFORE YOU THROW

RECYCLE

Hard & Soft Plastic, Metal, Glass, Cartons



Paper & Cardboard



NO FOOD OR LIQUID

Recycle only clean metal, plastic, glass and cartons.

GREEN PRODUCTION GUIDE

GREEN SEAL POTENTIAL



The EMA **Green Seal** is a recognition program honoring progress in sustainable production. The Program rating is determined on a scale of 200 points. A minimum threshold of 75 points must be obtained in order to receive EMA Green Seal recognition. The rating is based on a self-assessment by the production company on how well it complies with the Program criteria developed by EMA and the sustainability departments of the major studios. If you'd like to apply for an EMA **Gold Seal** a threshold of 125 points must be obtained.

Click the EMA icon to find out more about Green Seal Applications.

It is not necessary for productions to submit for a Green Seal after filling the PEACH worksheet.

See if you qualify based on points earned from PEACH (min. 75) and email the PEACH to awards@ema-online.org.

How to send this form

1. Sending this form is an **OPTIONAL** and additional step after completing PEACH worksheet
2. If you received over 75 points as indicated in your PEACH Dashboard, you can submit for a Green Seal and 125 points for EMA Gold Seal
3. Email your completed copy of PEACH to awards@ema-online.org.
4. To learn more about EMA Green Seal, click on the logo.



SUSTAINABILITY SUPERVISOR



SUSTAINABILITY SUPERVISOR

A dedicated position in charge of organising sustainability efforts in pre-production and production by:

- Collaborating with each department and location owners to integrate sustainability
- Implementing sustainable efforts with help of set PAs and department heads
- Recording and processing data

At the early stages of implementing sustainability in productions, a dedicated position is needed as a consultant. As most seasoned student film crews have carried out set procedures in certain ways, a point-person alleviates the stress of an entirely different work environment.

Goal:

To canonize sustainability efforts on set so each department carries out their respective duties, reducing the reliance on a sustainability supervisor OR to partner with CAS.



BUDGET

10.25.2018 REVISION

BUDGET

- Craft services (crafty) items could fluctuate based on cast and crew allergy and dietary restrictions.
- We've included crafty in the budget due to the wasteful nature of pre-packaged snacks on set. Though there are pre-packaged items on the budget, we have tried to make sure the product is at the very least organic, and we would purchase items in bulk as much as possible.

Category	Goods/Services	Vendor/ Payee	Cost (each)	Quantity	Total Cost
Waste	Annie's Organic Bunny Baked Snacks 1.0 oz, 36-count	Costco	\$13.99	2	\$27.98
Waste	Kirkland Signature Organic Fruity Snacks 0.8 oz, 72-count	Costco	\$16.49	2	\$32.98
Waste	Kirkland Signature Organic Animal Crackers, 64 oz.	Costco	\$11.79	1	\$11.79
Waste	Clif Kid Organic ZBar, 1.27 oz, 36-count	Costco	\$19.99	2	\$39.98

Waste	Made in Nature Toasted Coconut Chips 3 oz., 6-pack	Costco	\$21.99	3	\$65.97
Waste	Miscellaneous fresh fruit	Costco	To be discussed with Line Producer	To be discussed with Line Producer	\$200 (Approx.)
Waste	BPA-Free Customized Water Bottles	Eco-Marketing Solutions	\$5	50	\$250
Waste	Reusable Containers (mason jars, tupperware & professional sports jug)	Amazon	To be discussed with Line Producer	To be discussed with Line Producer	\$100 (Approx.)
Waste	World Centric's Biodegradable and Compostable Wheat Straw 9" Plates (Package of 200)	Amazon	\$36.84	2	\$73.68
Waste	100% Compostable Forks Spoons and Knives Cutlery Combo Set (380 pc.) with Convenient Tray by Ecovita	Amazon	\$54.56	1	\$54.56
Waste	Non-toxic detergent	Amazon	\$25.64	2	\$51.28
Waste	Eco-Smartbags Biodegradable Trash Bags, 13-Gallon, 24-Count Boxes (Pack of 6)	Amazon	\$41.34	2	\$82.68

Power Usage and Travel	Third Party Sequestration Credit	Terrapass	\$20 per 3,000lbs of carbon	7 days	\$140
Equipment, Props and Costumes	Behind-The-Scenes Video: Production	B&H	Canon 5d Mark II w. 20-70 f 2.8 L lens - \$50/day Shoulder Rig - \$25/day Battery Powered Portable 1k Led \$60/Day (x2) Zoom H6n, Shotgun Mic, Boom Pole, XLR Cable - \$50/day Director & PA food & transport - \$100/day Total Daily Expense - \$345/day	7 days	\$2415

Equipment, Props and Costumes	Behind-The-Scenes Video: Post Production	Freelance/Student	\$300	N/A	\$300
Equipment, Props and Costumes	Makeup	The Body Shop: Vegan Range	To be discussed with Hair & Make-Up	To be discussed with Hair & Make-Up	\$300 (Approx.)
Equipment, Props and Costumes	AmazonBasics AA Performance Alkaline Batteries (20-Pack)	Amazon	\$8.54	1	\$8.54

Total Approximate Project Cost: \$4,250



**Carbon neutrality is not
cheap, but sustainability
can be.**

Burden of Research

We have found that in trying to achieve carbon neutrality, a lot of cost had to be absorbed in the pursuit of a strategy. However, when the budget is broken down, the only true costs to production are:

- Reusable water bottles & sports jug
- Compostable utensils & plates
- Eco-friendly trash bags & cleaning supplies
- Coffee percolator

Other costs such as organic makeup and rechargeable batteries may be absorbed by respective departments.

**Not including documentary budget and organic crafty*



THE COST OF SUSTAINABILITY

Comparing budget items of a sustainable set with a normal student set of
a similar scope

50 Vapur Bottles (with Vapur contact from showrunner) = **\$109.75**



INVOICE

Page: 1

Vapur, Inc
 4700 Hwy 604
 400 Box 100217
 Denver, CO 80203-0217

Invoice Number: 5599-10719
 Invoice Date: 10/10/2018

Bill To: Vizion Gate
 Vizion Gate
 28 Council St, APT 28
 Brooklyn, NY 11207

Ship To: Vizion Gate
 Vizion Gate
 28 Council St, APT 28
 Brooklyn, NY 11207

Fee Method Type: Target Entity

Ship Via: UPS
Ship Date: 10/10/2018
Est Date: 10/10/2018
Terms: Credit Limit

Customer ID: 12719
Alt. Number: 0070883-100358
Alt. Date: 10/10/2018
Our Order No.: 00-0076
SubPerson:
Tracking No.: 15787668011000000000

Amount/Description	Unit	Order Qty	Quantity	Unit Price	Total Price
10719		10	10	1.00	10.00
0176: Shaver Cord	Each	10	10	1.00	10.00
10719		10	10	1.00	10.00
Accumulated Sh Shaver - Blue	Each	10	10	1.00	10.00
10719		10	10	1.00	10.00
Accumulated Sh Shaver - Tour Green	Each	10	10	1.00	10.00
10719		10	10	1.00	10.00
Accumulated Sh Shaver - Cord Grey	Each	10	10	1.00	10.00
10719		10	10	1.00	10.00
Vapur Reflex (3.5) Running Shoes - Teal/Black	Each	10	10	1.00	10.00
10719		10	10	1.00	10.00
Vapur Reflex (3.5) Sneakers - Red/Orange	Each	10	10	1.00	10.00
10719		10	10	1.00	10.00
Vapur Reflex Running (3.5) Sneakers - Orange	Each	10	10	1.00	10.00
10719		10	10	1.00	10.00
Shipping and Handling	Each	10	10	1.00	10.00
1.00000000	Each	10	10	1.00	10.00
UPS 10/10/18	Each	10	10	1.00	10.00
1.00000000	Each	10	10	1.00	10.00
Taxes Shipping	Each	10	10	1.00	10.00
1.0000000000000000					

Amount Subject to Sales Tax 4700 \$

Amount Charged from Sales Tax: 100.71

Subtotal: 100.71
Invoice Discount: 0.00
Tax: 0.00

Total Due: 100.71



Dixie Ultra Paper Plates x 500 count
= **\$40.00**

VS

World Centric's Biodegradable
Straw Plates x 500 count =
\$100.00



*Note: NYC composting sites do not
accept compostable plates and utensils*



Plastic Silverware x 1.5 (One order for Weekend 1 & half order for Weekend 2) = **\$26.99**

VS

Ecovita Compostable Utensils x 1.5 (One order for Weekend 1 & half order for Weekend 2) = **\$81.84**



Note: NYC composting sites do not accept compostable plates and utensils



Amazon 13 Gallon Trash Bags x 2 =
\$27.54

VS

Eco-smartbags 13 Gallon
Compostable Trash Bags x 2 =
\$73.32



MOVING FORWARD



INSTITUTIONALIZATION

Freshman Colloquium

A class dedicated to sustainability to provide freshmen with the mindset on the get-go.

Documentary

Documentary of pilot project will be given to Tisch to use as example. Will act as supplement to guide.

Gen-Ed Class

A film-centric class about sustainability on film productions with a syllabus including basic environmental science. Suggestion: Allow it to be considered a Natural Science to count as a Gen-Ed.

Sustainability Guide

A faculty-approved guide on the best ways to maintain a sustainable set. We understand going carbon neutral is an expensive endeavour, so suggestions will be as cost-effective as possible.

Liaison with Other Departments

Partnerships with CAS Department of Environmental Studies and Office of Sustainability to partner with potential Sustainability Supervisors.

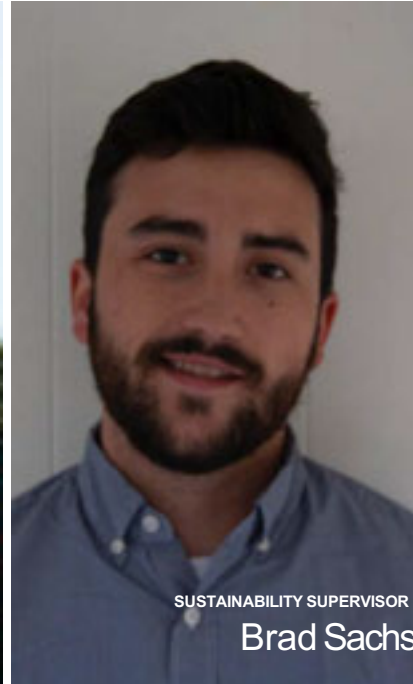
CLOSING STATEMENTS

TEAM

Vanneeda Keowmang:
Project leader, pre-production,
report generation

Brad Sachs:
Sustainability Supervisor,
environmental science
consultant, documentary
filmmaker

Heather Vaxer:
Liaison between Green Grant
team and production



THANK YOU